

# Our Actions After The Earthquake Disaster – Summary

Accompanying our DG Suat Baysan, our PRID Şafak Alpay, RI Foundation Trustee Geeta Manek, RID Faiz Kidwai has visited the earthquake affected sites in Adana, Antakya, İskenderun and Kırıkhan on February 27-28.

They have inspected the tent camp, the «Rotary Green Camp», consisting of the tents supplied by RI D2440 in İskenderun. Our PDG Hasan Akbayrak accompanied the group during their visit to the camp site created by Japanese volunteers.

RI D2430 DG Emre Öztürk and fellow Rotarians from the D2430 committee have accompanied the whole group for the duration of the visit.

The heart felt support provided by the Turkish Rotarians have made an impact on the visitors and they have expressed their gratitude on their way back.



# (1) In-Kind Donations\*

- 40 Shelter containers
- 2.662 Tents
- 150 Mattresses
- 15 refrigerators
- 8.033 Blankets
- 1.084 Coats
- 3.350 Corpse Bags
- 1 Excavator (To be used throughout rescue period)
- 1 Multi Functional Caravan (To be used throughout post disaster period)
- 1 Generator
- 1 Semi-truck fuel
- 625 Heaters
- 5.642 Boxes of Food
- 462 Bluetents
- 152 Boxes of Canned Goods
- 582 Boxes of Medicine and Other Medical Equipment
- 695 Boxes of Hygiene Material
- 22.850 Adult and Baby Diapers
- 5.000 Candles
- 950 LED Light Torch
- 3 Boxes of Powerbank
- 1 Mobile Kitchen
- 12.400 Pieces of Underwear
- 23 Mobile WC
- 4.000 Soaps
- 2.835 Boxes of Clothes
- 493 Pairs of Boots
- 65.000 Bottles of Water
- Logistics support with Ship to other in-kind donations

\* Monetary value equivalent to approximately **16.510.747 ₺.**



## (2) Mobile Multi-Clinic (MMC)

The documentation and funding for the **Mobile Multi-Clinic (MMC)** Global Grant Project, which has been focused on since the first week of the disaster, was completed rather quickly.

MMC will have a container designed for emergency response and patient follow-up and it will be located within a container city that again will be built by Rotary. The project's official application to Global Grant Program has been completed. Meanwhile, initial protocols were signed with the suppliers. It is expected that all units will be prepared and shipped to the field in the first weeks of March.



6.000 m2 vacant property in Adiyaman allocated to MMC



Rotarians' field visit to Adiyaman MMC location

Exemplary project visuals

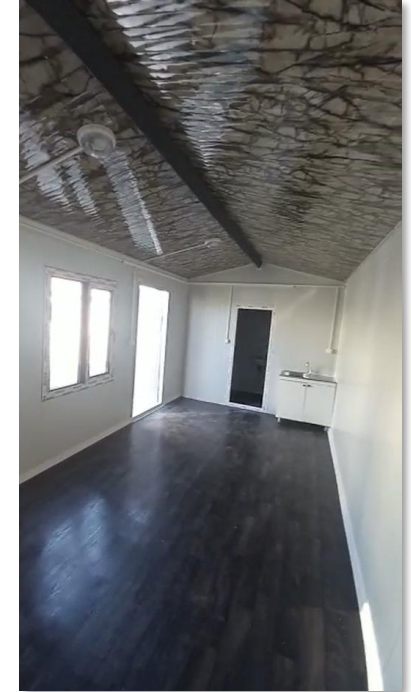


### (3) Container City

Under the leadership of our **Yeniköy Rotary Club**, **34** containers worth **2.3 million ₺** were ordered to be placed in **Antakya**, one of the earthquake zones.

District Clubs which took part in the project:

- Yeniköy Rotary Club - 13 containers
- Bosphorus RC - 10 containers
- Acarkent RC - 4 containers
- Suadiye RC - 2 containers
- Bebek RC - 1 container
- Suadiye Inner Wheel Club - 1 container
- Erenköy RC - 3 containers



### (3) Tent City

In addition to **20 family tents** and **2 large social area tents** suitable for winter conditions acquired by our **Izmit Rotary Club**, 7x12 mt., 84 square meters of field type tents have also been set up.

A Prefabricic WC which includes 3 sinks and toilets was also supplied by Izmit RC through a sponsor was delivered to Izmit Municipality for use in the same region.

Under Izmit Municipality's control, our Social Area tent will have psycho-social support areas, meeting tables, play and education areas for children, and a library for women and children. Izmit RC members' spouses began to collect children's games, toys, box and intelligence games, books, wool and knitting tools and activity packages for the Social Tent which is planned to be delivered to the site in March.



## (4) İstanbul RC

Istanbul Rotary Club has donated 2.300 boxes of Ramadan food support, a container of drinking water (30 tons), 200 hygiene boxes and 1.000 pcs of clothing to Hatay.

800 boxes of Ramadan food support, 200 hygiene boxes, 1.300 pcs of clothing to Adıyaman.

